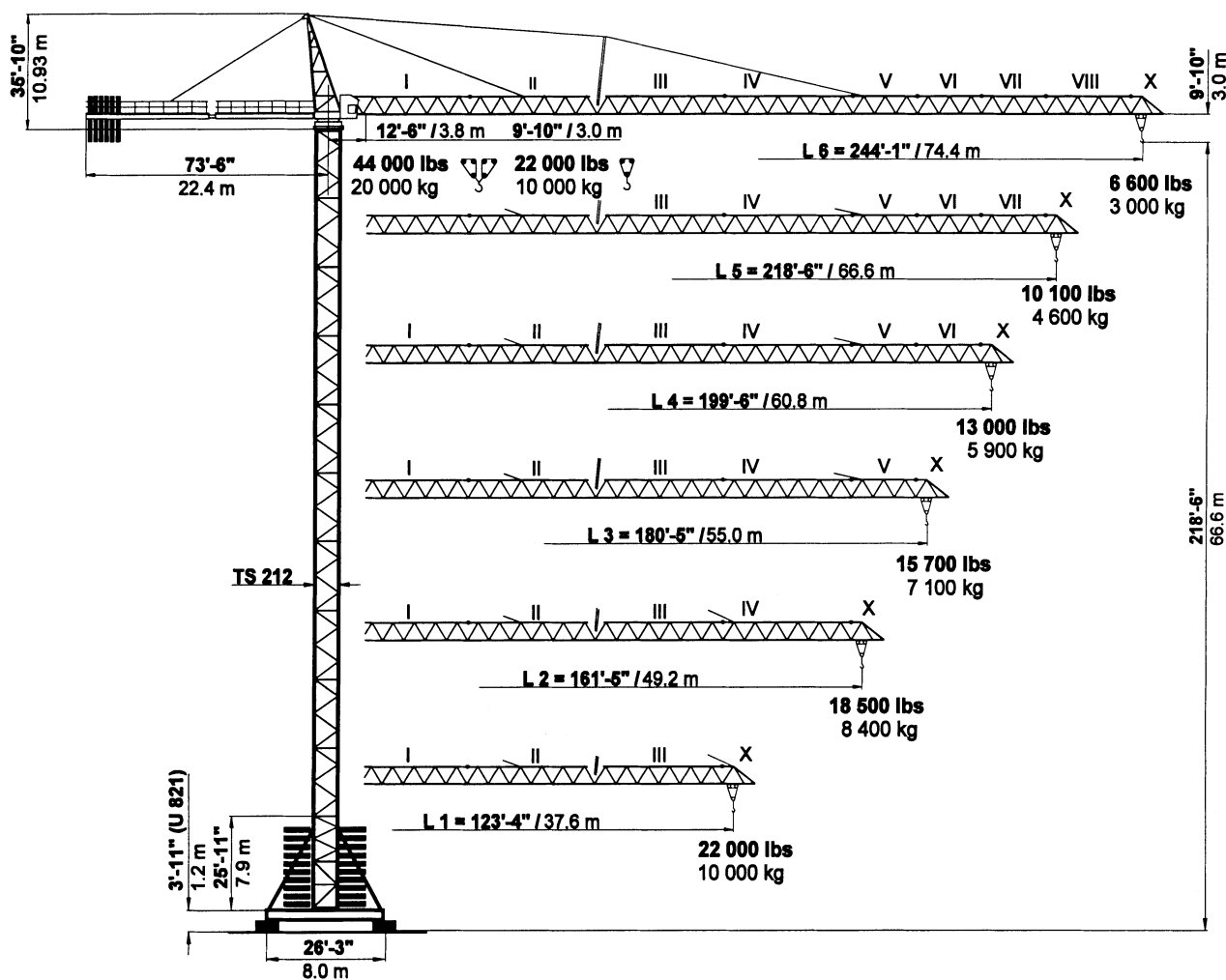




PEINER SK 405

Hammerhead Tower Crane
22,000-44,000 lbs. (10-20 mt)
Lifting Capacity

SPECIFICATIONS



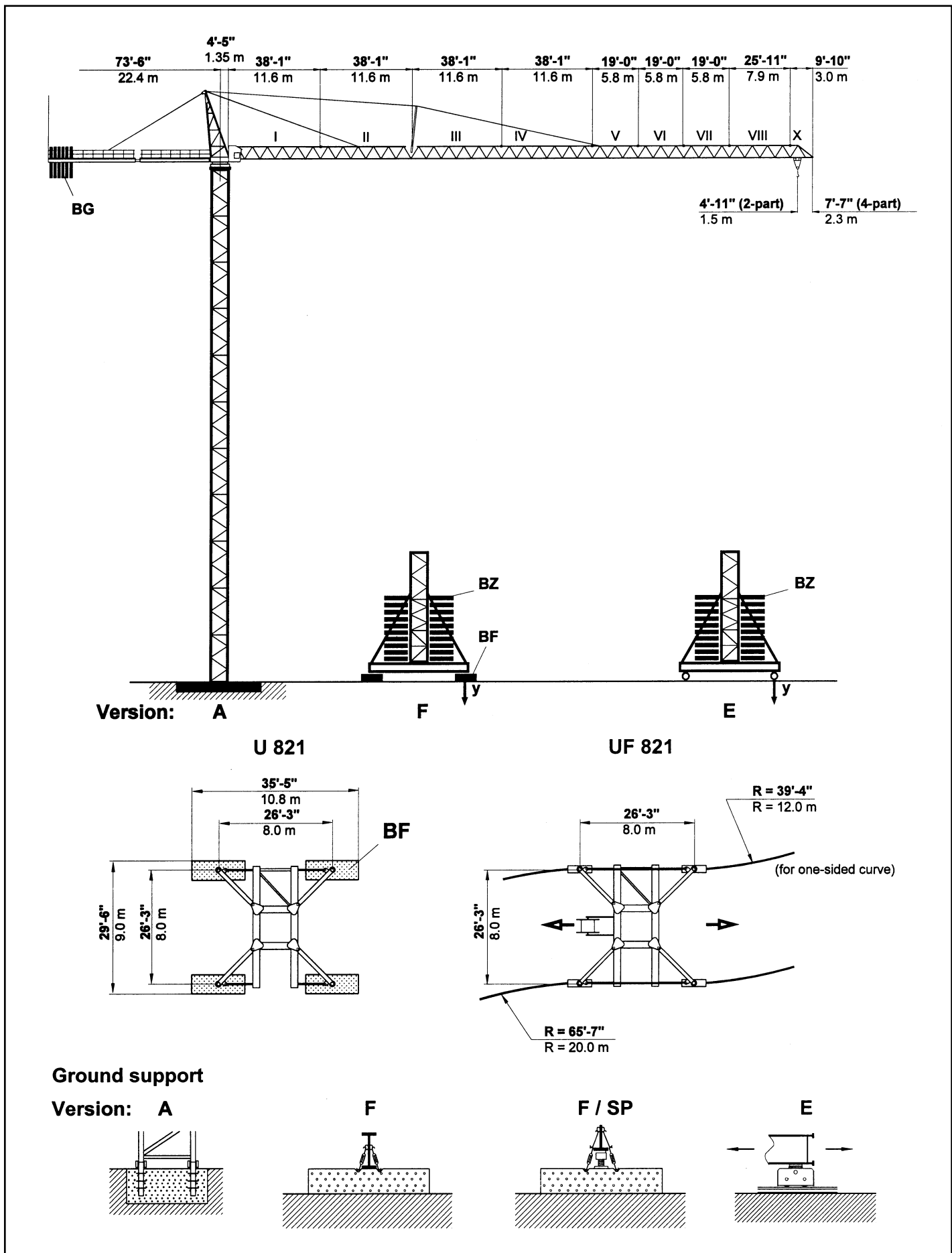
simple, available and
cost effective™

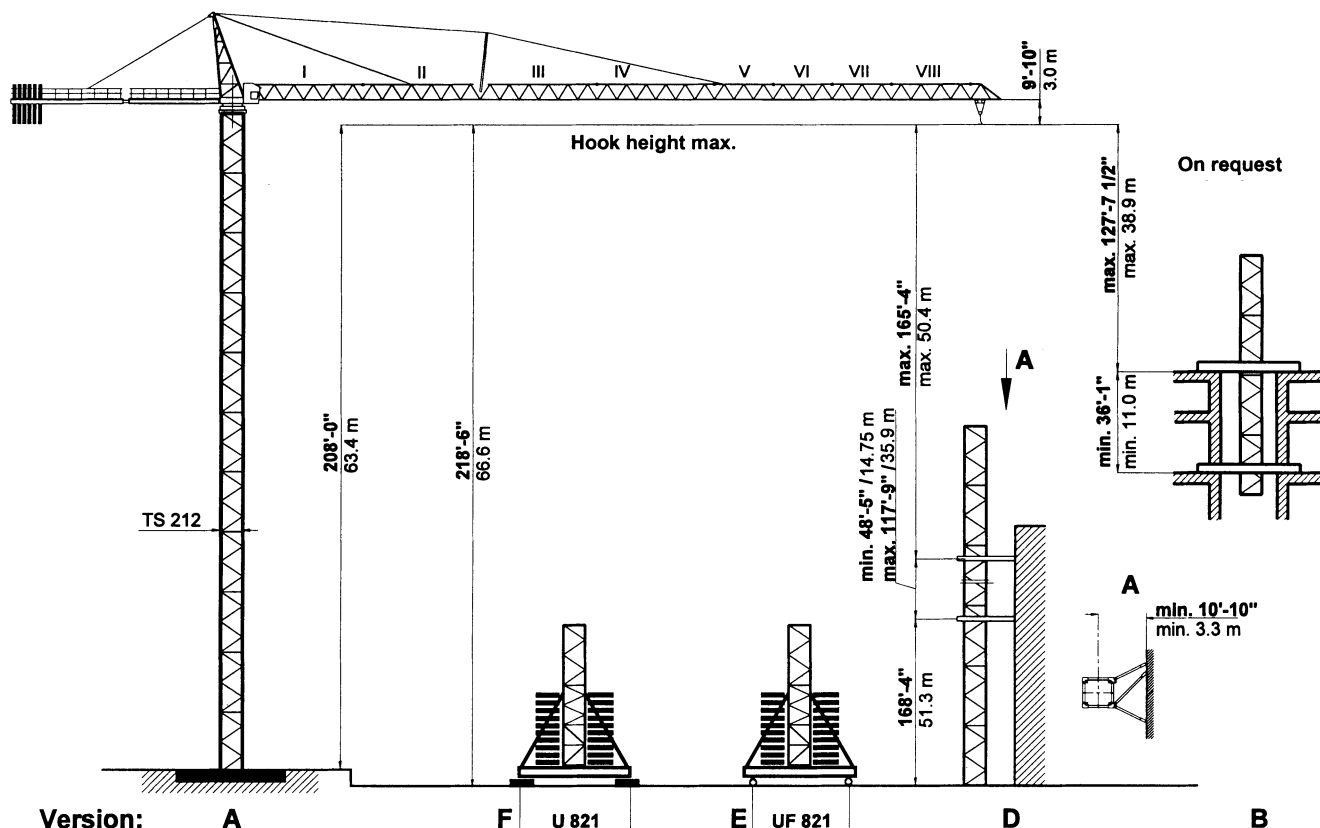
Machines shown may have optional equipment.



PEINER SK 405

Combinations of tower section, hook heights, forces acting per corner, base ballast



**PEINER SK 405 Tower TS 212**

TS 212	Version A			Version F			Version E		
Tower	HH	Tower	HH	BZ	y		BZ	y	
TS 212.1	ft m	TSV 212 TS 212.1	ft m	+ BF kips / t	in service kips / kN	out of service kips / kN	kips / t	in service kips / kN	out of service kips / kN
11 x TS 212.1	208'-0"* 63.4*	1 x TSV 212 10 x TS 212.1	218'-6"* 66.6*	239.0 108.4	228 1015	568 1138	261.9 118.8	248 1105	267 1189
10 x TS 212.1	188'-8" 57.5	1 x TSV 212 9 x TS 212.1	199'-2" 60.7	209.9 95.2	213 948	226 1005	232.8 105.6	232 1033	237 1056
9 x TS 212.1	169'-3" 51.6	1 x TSV 212 8 x TS 212.1	179'-9" 54.8	180.8 82.0	198 882	198 879	203.7 92.4	217 963	209 929
8 x TS 212.1	149'-11" 45.7	1 x TSV 212 7 x TS 212.1	160'-5" 48.9	151.7 68.8	184 817	170 758	174.6 79.2	201 894	182 808
7 x TS 212.1	130'-7" 39.8	1 x TSV 212 6 x TS 212.1	141'-1" 43.0	122.6 55.6	170 754	144 642	174.6 79.2	193 860	163 725
6 x TS 212.1	111'-3" 33.9	1 x TSV 212 5 x TS 212.1	121'-9" 37.1	122.6 55.6	163 725	127 566	145.5 66.0	178 794	138 615
5 x TS 212.1	91'-10" 28.0	1 x TSV 212 4 x TS 212.1	102'-4" 31.2	122.6 55.6	157 697	111 495	145.5 66.0	172 763	122 544
4 x TS 212.1	72'-6" 22.1	1 x TSV 212 3 x TS 212.1	83'-0" 25.3	93.5 42.4	143 638	105 469	116.4 52.8	157 700	108 480
3 x TS 212.1	53'-2" 16.2	1 x TSV 212 2 x TS 212.1	63'-8" 19.4	93.5 42.4	140 622	105 469	116.4 52.8	151 671	108 480
2 x TS 212.1	33'-10" 10.3	1 x TSV 212 1 x TS 212.1	44'-3" 13.5	122.6 55.6	140 622	105 469	116.4 52.8	145 645	108 480
Foundation 22'-8" x 22'-8" x 5'-7" 6.9 x 6.9 x 1.7 m				Stationary base			Travelling base		
Anchor stools 4 x FF 212				U 821			UF 821		
				BF 4 x 8.82 kips 4 x 4.0 t	BZ Block 14.55 kips Block 6.6 t		Bogie Curve F 500		

If TSK 212 section is used the hook height is increased by 6'-7" (2 m).



* Lower climbing section after erection.

TS 212.1 = 19'-4 1/4" / 5.9 m

TSV 212 = 25'-11" / 7.9 m

TSK 212 = 6'-7" / 2.0 m

**PEINER SK 405 Radius and Capacity**

Jib	Max. capacity max.	2-Part Line  max. 22,000 lbs max. 10.0 t																	
ft m	22,000 lbs 10.0 t	70'-11" 21.6	73'-10" 22.5	78'-9" 24.0	85'-4" 26.0	98'-5" 30.0	105'-0" 32.0	118'-1" 36.0	123'-4" 37.6	131'-3" 40.0	161'-5" 49.2	170'-7" 52.0	180'-5" 55.0	190'-3" 58.0	199'-6" 60.8	210'-0" 64.0	218'-6" 66.6	229'-8" 70.0	244'-1" 74.4
L6 244'-1" 74.4	9'-10" - 88'-7" 3.0 - 27.0 m	22000 10.0	22000 10.0	22000 10.0	22000 10.0	19600 8.9	18100 8.2	15900 7.2	15000 6.8	14100 6.4	11000 5.0	10400 4.7	9800 4.4	9000 4.1	8600 3.9	7900 3.6	7700 3.5	7100 3.2	6600 3.0
L5 218'-6" 66.6	9'-10" - 105'-0" 3.0 - 32.0 m	22000 10.0	22000 10.0	22000 10.0	22000 10.0	22000 10.0	22000 10.0	20700 9.4	19700 8.9	18100 8.2	14500 6.6	13700 6.2	12700 5.8	11900 5.4	11500 5.2	10600 4.8	10100 4.6		
L4 199'-6" 60.8	9'-10" - 123'-4" 3.0 - 37.6 m	22000 10.0	22000 10.0	22000 10.0	22000 10.0	22000 10.0	22000 10.0	22000 10.0	22000 10.0	20700 9.4	16600 7.5	15700 7.1	14600 6.6	13700 6.2	13000 5.9				
L3 180'-5" 55.0	9'-10" - 131'-3" 3.0 - 40.0 m	22000 10.0	22000 10.0	22000 10.0	22000 10.0	22000 10.0	22000 10.0	22000 10.0	22000 10.0	22000 10.0	17900 8.1	16800 7.6	15700 7.1						
L2 161'-5" 49.2	9'-10" - 137'-9" 3.0 - 42.0 m	22000 10.0	22000 10.0	22000 10.0	22000 10.0	22000 10.0	22000 10.0	22000 10.0	22000 10.0	22000 10.0	18500 8.4								
L1 123'-4" 37.6	9'-10" - 123'-4" 3.0 - 37.6 m	22000 10.0	22000 10.0	22000 10.0	22000 10.0	22000 10.0	22000 10.0	22000 10.0	22000 10.0	22000 10.0									
ft m	44,000 lbs 20.0 t	4-Part Line  max. 44,000 lbs max. 20.0 t										Radius - 2'-7" (- 0.8 m)							
L6 241'-6" 73.6	12'-6" - 45'-7" 3.8 - 13.9 m	25600 11.6	24300 11.0	22500 10.2	20300 9.2	17900 8.1	16300 7.4	14100 6.4	13200 6.0	11900 5.4	9300 4.2	8600 3.9	7900 3.6	7300 3.3	6800 3.1	6200 2.8	6000 2.7	5700 2.6	4900 2.2
L5 215'-11" 65.8	12'-6" - 57'-5" 3.8 - 17.5 m	34400 15.6	32800 14.9	30400 13.8	27600 12.5	23400 10.6	20300 9.2	19000 8.6	18100 8.2	16500 7.5	12800 5.8	11900 5.4	11000 5.0	10100 4.6	9500 4.3	8800 4.0	8400 3.8		
L4 196'-10" 60.0	12'-6" - 65'-0" 3.8 - 19.8 m	40100 18.2	38100 17.3	35300 16.0	32200 14.6	27100 12.3	25100 11.4	22000 10.0	21400 9.7	19400 8.8	15200 6.9	13900 6.3	12800 5.8	11900 5.4	11200 5.1				
L3 177'-10" 54.2	12'-6" - 68'-7" 3.8 - 20.9 m	42500 19.3	40600 18.4	37700 17.1	34400 15.6	29100 13.2	26900 12.2	23400 10.6	22800 10.3	20700 9.4	16300 7.4	15000 6.8	14100 6.4						
L2 158'-10" 48.4	12'-6" - 70'-10" 3.8 - 21.6 m	44000 20.0	42100 19.1	39000 17.7	35700 16.2	30200 13.7	28000 12.7	24300 11.0	23700 10.8	21800 9.9	17000 7.7								
L1 120'-9" 36.8	12'-6" - 73'-10" 3.8 - 22.5 m	44000 20.0	44000 20.0	41000 18.6	37500 17.0	31700 14.4	29300 13.3	25600 11.6	24900 11.3										

Speeds

FU 8-200/4		v = 0 → ~ 265 fpm (80 m / min.)					1 x 10.2 HP 1 x 7.5 kW		
SR 10-190/3		v = 0 → ~ 115 fpm (36 m / min.)					2 x 16.3 HP 2 x 12.0 kW		
K WB 150/4		v = 0 → 1.0 rpm (min ⁻¹)	L1, L2 L3, L4, L5, L6				2 x 12.24 HP 2 x 9 kW 3 x 12.24 HP 3 x 9 kW		
2-Part Line HK max. = 820' (250 m) 5- Layers							480 V / 60 Hz / 3 ph		
Type SR WB 66- 100/4F [108 HP] [79 kW]			2-Part Line 	→ 444 fpm 134 m/min	5 500 lbs 2 500 kg	4-Part Line 	→ 222 fpm 67 m/min	11 000 lbs 5 000 kg	Total motor output ~155 HP without SR 10-190/3 ~114 kW Connected power 170 kVA
				→ 276 fpm 84 m/min	9 300 lbs 4 200 kg		→ 138 fpm 42 m/min	18 600 lbs 8 400 kg	
				→ 180 fpm 54 m/min	15 700 lbs 7 100 kg		→ 90 fpm 27 m/min	31 400 lbs 14 200 kg	
				→ 108 fpm 34 m/min	22 000 lbs 10 000 kg		→ 54 fpm 17 m/min	44 000 lbs 20 000 kg	
2-Part Line HK max. = 985' (300 m) 6- Layers									
Type SR WB 102- 125/4F [167 HP] [122 kW]			2-Part Line 	→ 444 fpm 134 m/min	7 700 lbs 3 500 kg	4-Part Line 	→ 222 fpm 67 m/min	15 400 lbs 7 000 kg	Total motor output ~213 HP without SR 10-190/3 ~157 kW Connected power 240 kVA
				→ 276 fpm 84 m/min	13 200 lbs 6 000 kg		→ 138 fpm 42 m/min	26 400 lbs 12 000 kg	
				→ 180 fpm 54 m/min	22 000 lbs 10 000 kg		→ 90 fpm 27 m/min	44 000 lbs 20 000 kg	
				→ 108 fpm 34 m/min			→ 54 fpm 17 m/min		

Counterweight

Jib		L 1	L 2	L 3	L 4	L 5	L 6
Counterweight 66 WB	BG	30 400 lbs 13 850 kg	40 400 lbs 18 400 kg	47 200 lbs 21 500 kg	47 200 lbs 21 500 kg	50 400 lbs 22 950 kg	50 800 lbs 23 150 kg
	[lbs]	4 x 6 800 1 x 3 200	5 x 6 800 2 x 3 200	6 x 6 800 2 x 3 200	6 x 6 800 2 x 3 200	6 x 6 800 3 x 3 200	7 x 6 800 1 x 3 200
	[t]	4 x 3.10 1 x 1.45	5 x 3.10 2 x 1.45	6 x 3.10 2 x 1.45	6 x 3.10 2 x 1.45	6 x 3.10 3 x 1.45	7 x 3.10 1 x 1.45
Counterweight 102 WB	BG	30 400 lbs 13 850 kg	37 200 lbs 16 950 kg	44 000 lbs 20 050 kg	44 000 lbs 20 050 kg	47 200 lbs 21 500 kg	47 600 lbs 21 700 kg
	[lbs]	4 x 6 800 1 x 3 200	5 x 6 800 1 x 3 200	6 x 6 800 1 x 3 200	6 x 6 800 1 x 3 200	6 x 6 800 2 x 3 200	7 x 6 800
	[t]	4 x 3.10 1 x 1.45	5 x 3.10 1 x 1.45	6 x 3.10 1 x 1.45	6 x 3.10 1 x 1.45	6 x 3.10 2 x 1.45	7 x 3.10

**PEINER SK 405 Dimensions and transport weights**

See operating manual for mounting weights

	Designation		Dimensions (ft / m)			Weight	Volume
			l	b	h	lbs / t	ft³ / m³
1	Jib		38.72	6.14	7.12	7 030	1 693
	Section I		11.80	1.87	2.17	3.19	47.9
	Section II		38.72	6.04	5.97	6 660	1 396
	Section III		11.80	1.84	1.82	3.02	39.4
	Section IV		38.72	6.04	5.97	3 660	1 396
	Section V		11.80	1.84	1.82	1.66	39.4
	Section VI		38.72	6.04	5.97	4 410	1 396
	Section VII		11.80	1.84	1.82	2.00	39.4
	Section VIII		19.69	6.04	5.97	1 980	710
	Jib tip X		6.00	1.84	1.82	0.90	20.0
			19.69	6.04	6.00	1 430	716
			6.00	1.84	1.83	0.65	20.1
			19.69	6.04	6.00	1 230	716
			6.00	1.84	1.83	0.56	20.1
2	Tower top compl.		26.08	6.04	6.00	1 390	945
			7.95	1.84	1.83	0.63	26.7
3	Turntable with slewing ring support and motors		10.17	5.97	6.40	990	388
			3.10	1.82	1.95	0.45	11.0
4	Cabin		29.36	7.05	8.96	8 600	1855
			8.95	2.15	2.73	3.90	52.5
5	Counter jib with hoist winch + electrical panel		9.68	7.71	7.55	21 720	563
			2.95	2.35	2.30	9.85	15.9
6	Hoist winch		5.41	3.61	7.15	1 040	139
			1.65	1.10	2.18	0.47	3.9
7	Tower section		8.46	6.56	7.87	2 050	436
			2.58	2.00	2.40	0.93	12.4
8	Traveling base, folded		38.06	9.02	5.57	15 810	1912
			11.60	2.75	1.70	7.17	52.3
9	Stationary base, folded		31.86	6.50	2.33	23130 *	482
			9.71	1.98	0.71	10.49 *	13.6
10	Central ballast block		7.51	5.45	3.28	5 400	134
			2.29	1.66	1.00	2.45	8.4
11	Foundation pad		11.48	7.41	3.94	12720 *	335
			3.50	2.26	1.20	5.77 *	9.5
12	Accessories		5.08	0.63	14.76	6 800	47
			1.55	0.19	4.50	3.10	1.3
13	Tower section		3.94	0.46	9.00	3 200	16
			1.20	0.14	2.74	1.45	0.5
14	Traveling base, folded		19.52	7.78	8.01	9 130	1 216
			5.95	2.37	2.45	4.14	34.4
15	Stationary base, folded		31.17	9.84	10.00	20 330	3 067
			9.50	3.00	3.05	9.22	86.9
16	Central ballast block		6.63	7.87	9.84	6 170	513
			2.02	2.40	3.00	2.80	14.5
17	Foundation pad		41.01	9.74	7.05	35 050	2 816
			12.5	2.97	2.15	15.90	79.8
18	Accessories		34.55	9.06	2.79	17 130	873
			10.53	2.76	0.85	7.77	24.7
19	Central ballast block		4.50	2.05	0.40	6.60	3.7
			14.77	6.73	1.31	14.55	130
20	Foundation pad		9.84	3.94	0.75	6.00	2.7
			3.00	1.20	2.46	13.22	95
21	Accessories					13 140	
						5.96	



For more information, product demonstration, or details on lease and rental plans, please contact your local Terex Towers Distributor.

We reserve the right to amend these specifications at any time without notice. The only warranty applicable is our standard written warranty applicable to the particular product and sale. We make no other warranty, expressed or implied.



TEREX TOWERS

202 Raleigh Street
Wilmington, NC 28412 USA
(910) 395-8500 • FAX: (910) 395-8547
E-mail: wilmington@terexlifting.com

www.terexlift.com